

Perth Cultural Centre (PCC)

Landscape design of the PCC as part of EPRA's activation program. Project highlights include creating a roof top Urban Orchard, converting an existing water feature into a freshwater Urban Wetland, and design of a new musical playground. Other key elements involve the rejuvenation of garden beds with diverse WA plant species, restoration of street furniture, and using salvaged and recycled materials in the hard landscaping works. JBA's landscape design role has extended to providing communication and community engagement services for events such as Urban Orchard planting days, Urban Wetland biodiversity workshops and public lectures.

ABOUT JOSH BYRNE & ASSOCIATES

JBA offers an integrated mix of landscape design, sustainability consultancy, environmental communication and community engagement services for development projects of different scales. JBA focuses on projects that are genuinely committed to being innovative and sustainable.

WHAT WE DO

JBA's approach to industry best practice sustainable landscape development aims to deliver high-quality, attractive, and water sensitive landscaping that incorporates local or regional plant species, efficient irrigation systems, appropriate soil conditioning and mulching, low impact materials with reduced embodied energy; provides a good thermal performance interface with the built form; and promotes and enhances key natural assets and landforms.

Depending on the type of project and client requirements, our services can also include design and integration of water management systems (rainwater harvesting, wastewater treatment and reuse, stormwater flows and infiltration), organic waste recycling systems, revegetation and stewardship programs, local food production, public art and other community activation opportunities.

In addition to detailed landscape design and documentation, JBA's sustainability consultancy, environmental communication and community engagement services can add value, create linkages and help promote the achievements of a project.

OUR TEAM

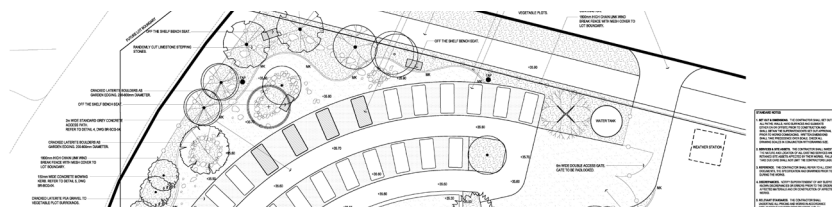
JBA's team has backgrounds in the fields of landscape design, environmental science, sustainability policy, architecture, engineering, project management, community development, media and communications.

All have extensive experience working within a broad range of disciplines in their respective industries.



The Grove: Leading, Learning, Living Project

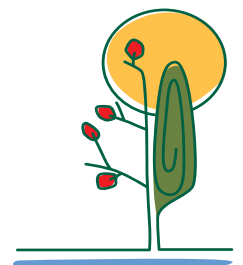
Design and technical development of leading edge landscape water-related initiatives for the new Town of Cottesloe, Shire of Peppermint Grove and Town of Mosman Park Library, Council Offices and Community Centre. These initiatives include the capture of rainwater to meet 100% of internal water demand; onsite treatment of stormwater flows to improve water quality prior to infiltration into the aquifer; and an integrated wastewater system for separation, treatment and reuse of greywater (showers and hand basins), brown water (toilets as well as kitchen) and yellow water (urinals).



Brighton Community Garden

Co-design of one of the first developer funded community gardens in WA included design support to the Brighton Estate landscape architects for concept plan development, plant species selection and water management advice. JBA's role also involved community engagement support to Satterley's community development team.

For more information, please visit our website and download a copy of **JBA's Capacity Statement:** www.joshbyrne.com.au



phone 08 9433 3721
suite 10, 16 phillimore st
fremantle wa 6160
design@joshbyrne.com.au